

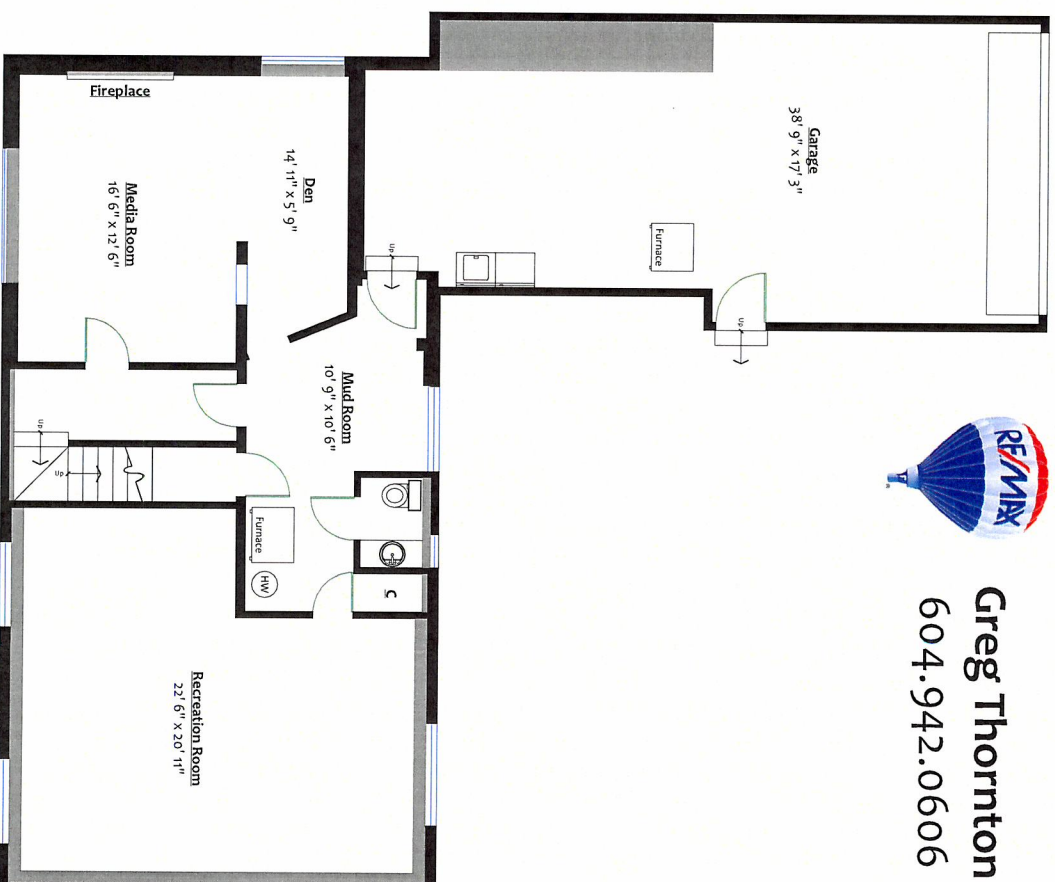
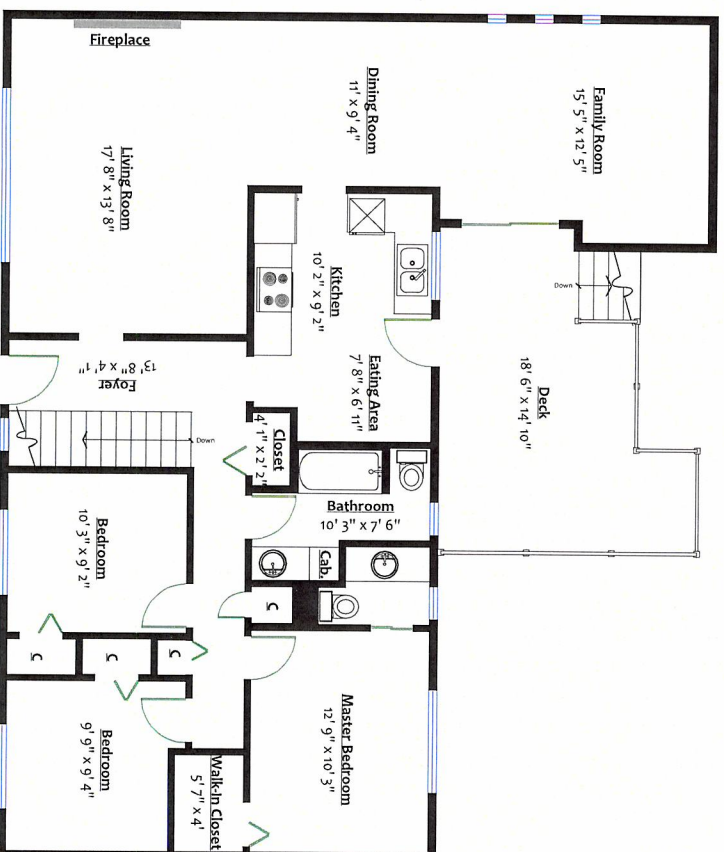
**1786 Heather Avenue,
Port Coquitlam, B.C.**

Totals**	
Main Level:	1,419 sq. ft.
Lower Level:	1,163 sq. ft.
Total:	2,582 sq. ft.

Garage:	662 sq. ft.
Deck:	226 sq. ft.
Total:	888 sq. ft.



Greg Thornton
604.942.0606



** Approx. based on interior measurements to exterior walls
*** Total square footage not taken from original blueprints
*** Includes unfinished areas and under-height