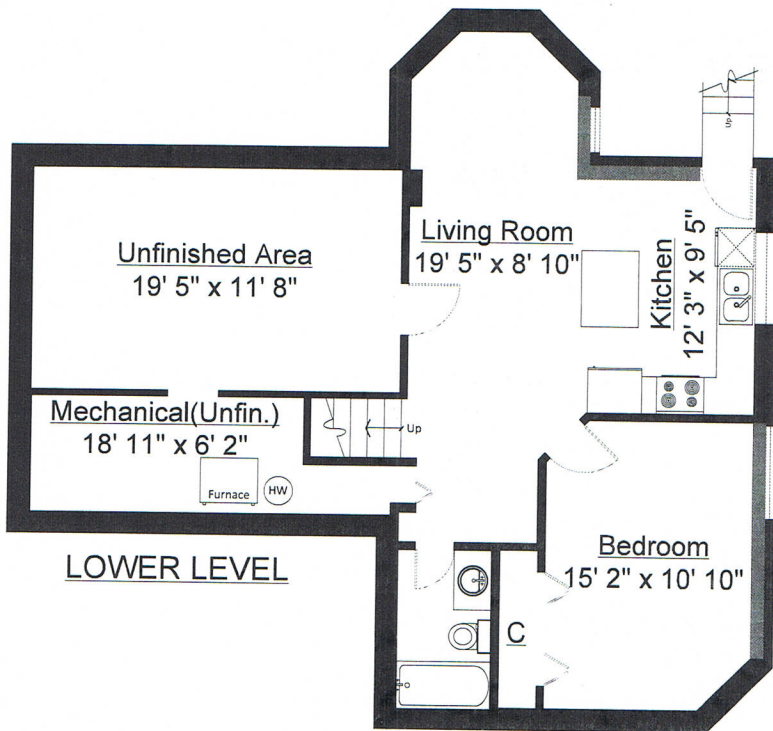
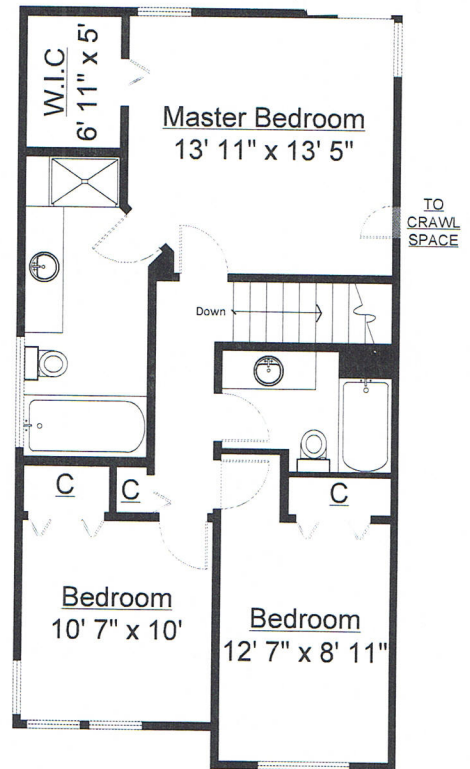
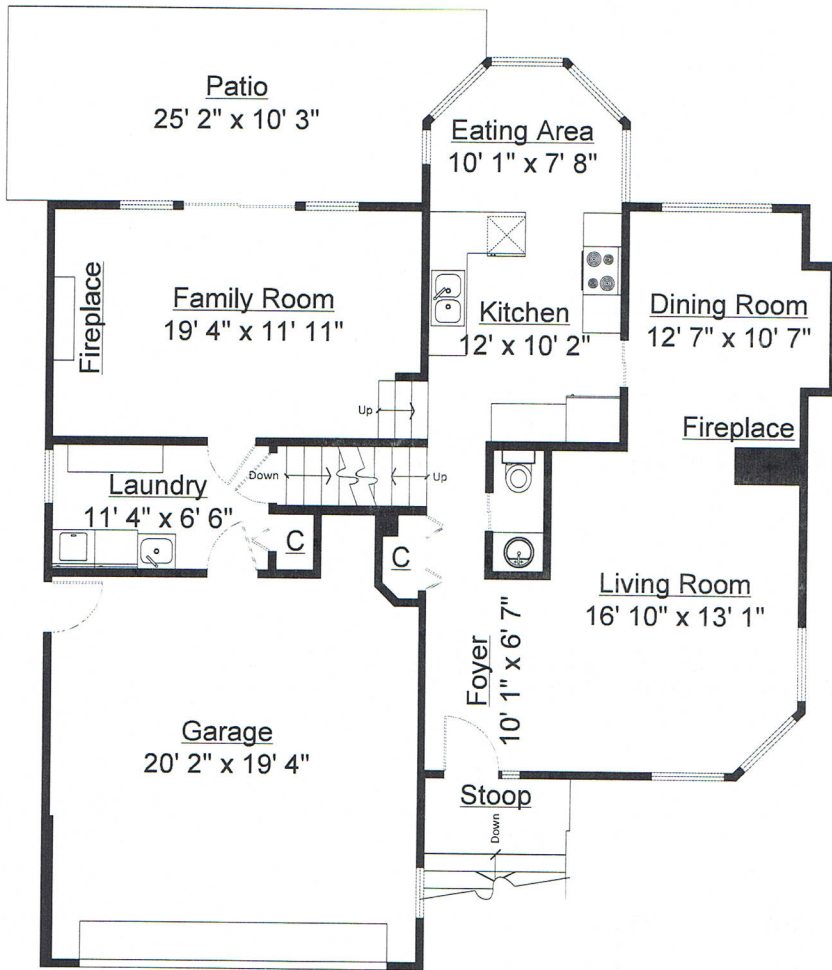


# 1517 Bramble Lane, Coquitlam

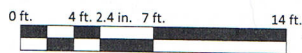


## Totals\*\*

Main Level:	1,074 sq. ft.
Upper Level:	781sq. ft.
Lower Level:	701 sq. ft.
<b>TOTAL:</b>	<b>2,556 sq. ft.</b>
Unfinished:	401 sq. ft.
<b>GRAND TOTAL:</b>	<b>2,957 sq. ft.</b>

## Other Areas

Patio:	237 sq. ft.
Garage:	416 sq. ft.
<b>Total:</b>	<b>653 sq. ft.</b>



\*\* Approx. based on interior measurements to exterior walls  
 \*\* Total square footage not taken from original blueprints